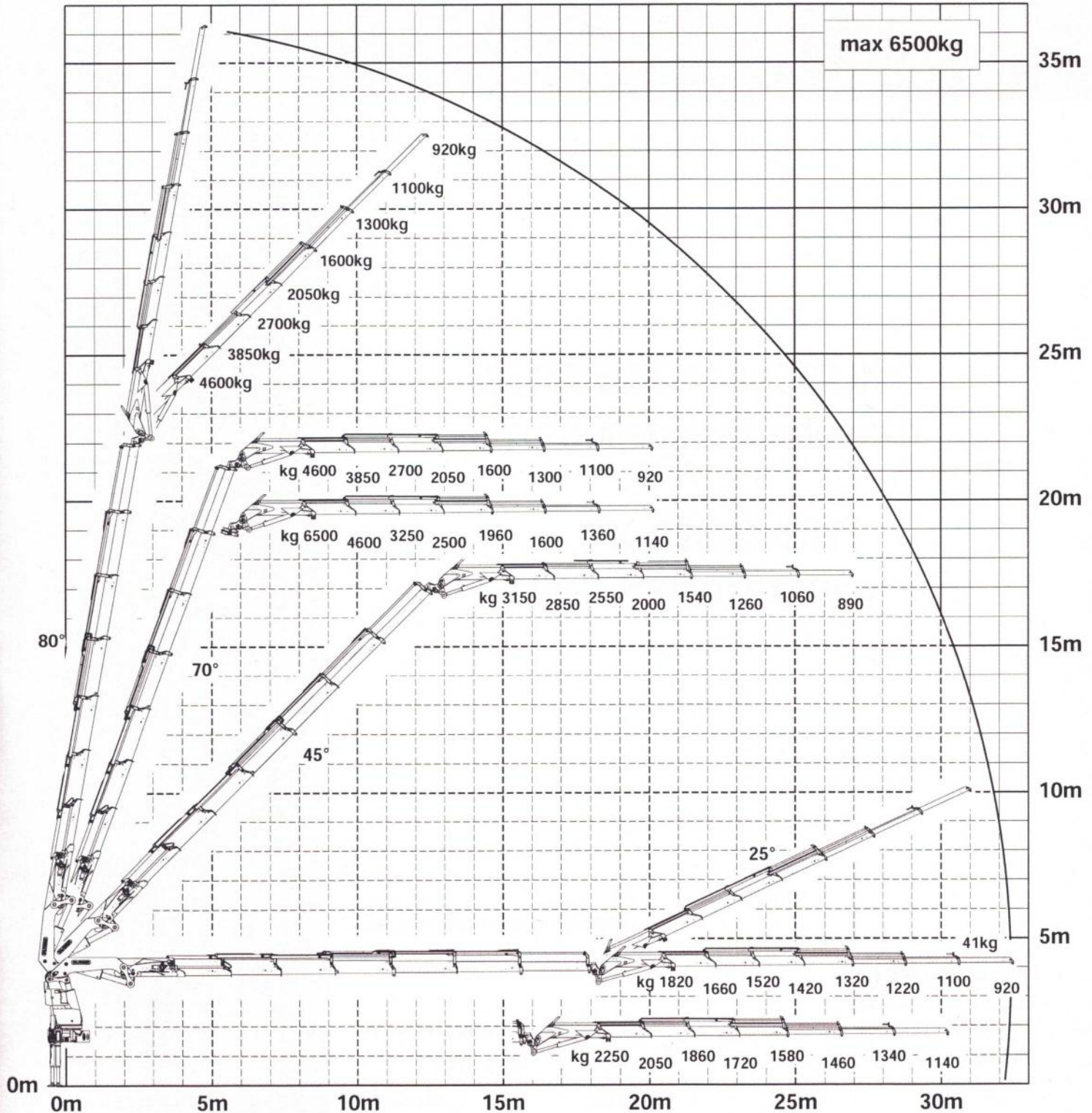


Subject to change, production tolerances have to be taken into account.

DPS ^{plus}
Dual Power System



When using mechanical boom extensions, the loads shown on the charts need to be reduced by the weight of these extensions.
Symbolic crane figure, indications at 20° main boom position & load arm in horizontal position



For Rope winch load capacity refer to page
Page 020.31100 2.5t Page 020.32100 3.5t